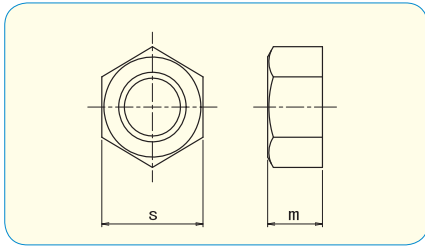


NOTE: Zinc 3Cr. Plated and Black 3Cr. Plated are RoHS compliant trivalent finishes

## HEX NUT, JIS type 1 JIS B1181 appendix



How to order or inquire: R830-B1181-finish code diameter  
 Example: R830-B1181-CR3 10  
 Finish codes: CR3 for Zinc 3Cr. Plated, CR3B for Black 3Cr. Plated

How to order or inquire: R830-B1181-material code diameter  
 Example: R830-B1181-A2 10  
 Material codes: A2 for Stainless Steel A2

### ●Material · plating

Steel Class6 / Zinc 3Cr. Plated  
 Steel Class6 / Zinc Black 3Cr. Plated

### ●Material

Stainless Steel A2

	Box q'ty	SIZE	
		s	m
M2	16000	4	1.6
M2.3	5000	4.5	1.8
M2.5	4000	5	2
M2.6	8000	5	2
M3	5000	5.5	2.4
M3.5	3500	6	2.8
M4	2500	7	3.2
M5	1500	8	4
M6	1000	10	5
M8	600	13	6.5
M10	300	17	8
M12	200	19	10
M14	130	22	11
M16	100	24	13
M18	70	27	15
M20	50	30	16



	Box q'ty	SIZE	
		s	m
M2	8000	4	1.6
M2.5	4000	5	2
M2.6	4000	5	2
M3	4000	5.5	2.4
M3.5	2000	6	2.8
M4	2000	7	3.2
M5	1000	8	4
M6	1500	10	5
M8	600	13	6.5
M10	300	17	8
M12	200	19	10
M14	120	22	11
M16	100	24	13
M18	60	27	15
M20	50	30	16
M22	100	32	18
M24	75	36	19
M27	50	41	22
M30	35	46	24
M36	20	55	29
M42	10	65	34



## HEX NUT, JIS type 1 JIS B1181 appendix

How to order or inquire: R830-B1181-material code diameter

Example: R830-B1181-316L 10

Material codes: 316L for Stainless Steel 316L

● **Material**

**SUS 316L** Stainless Steel A4

	Box q'ty	SIZE	
		s	m
M2	100	4	1.6
M3	100	5.5	2.4
M4	100	7	3.2
M5	100	8	4
M6	100	10	5
M8	100	13	6.5
M10	100	17	8
M12	100	19	10
M14	100	22	11
M16	100	24	13
M18	100	27	15
M20	100	30	16
M22	100	32	18
M24	100	36	19
M27	100	41	22
M30	100	46	24
M33	100	50	26
M36	100	55	29
M39	100	60	31
M42	100	65	34
M45	100	70	36
M48	100	75	38
M52	100	80	42



How to order or inquire: R830-B1181-material code diameter

Example: R830-B1181-310 12

Material codes: 310 for Stainless Steel 310

● **Material**

**SUS 310S**  
Stainless Steel

	Box q'ty	SIZE	
		s	m
M5	100	8	4
M6	100	10	5
M8	100	13	6.5
M10	100	17	8
M12	100	19	10
M14	100	22	11
M16	100	24	13
M18	100	27	15
M20	100	30	16
M22	100	32	18
M24	100	36	19
M27	100	41	22
M30	100	46	24
M33	100	50	26
M36	100	55	29



How to order or inquire: R830-B1181-material code diameter

Example: R830-B1181-310 12

Material codes: TI for Titanium

● **Material**

**TITAN**

	Box q'ty	SIZE	
		s	m
M3	200	5.5	2.4
M4	200	7	3.2
M5	200	8	4
M6	200	10	5
M8	200	13	6.5
M10	200	17	8
M12	200	19	10
M14	200	22	11
M16	200	24	13
M18	200	27	15
M20	200	30	16
M22	200	32	18
M24	200	36	19
M30	200	46	24



How to order or inquire: R830-B1181-finish code diameter

Example: R830-B1181-DI 12

Finish codes: DI for DISGO plated

● **Material · plating**

S45C / **DISGO**

HRC23~28

	Box q'ty	SIZE	
		s	m
M8	600	13	6.5
M10	300	17	8
M12	200	19	10
M16	100	24	13

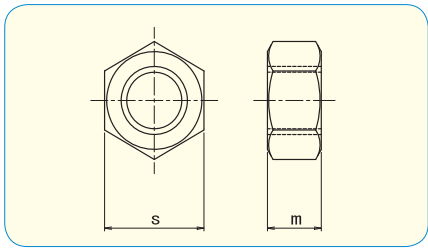


**High Rustproof Plating**

**DISGO**

- No Hydrogen-Embrittlement.
- No Cr. contained.
- Special plating for High tensile Fasteners. (class 8.8 / 10.9 / 12.9)

# HEX NUT, JIS type 2 JIS B1181 appendix



How to order or inquire: R830-B1181-2-finish code diameter  
 Example: R830-B1181-2-CR3 10  
 Finish codes: CR3 for Zinc 3Cr. Plated, CR3B for Black 3Cr. Plated

How to order or inquire: R830-B1181-2-material code diameter  
 Example: R830-B1181-2-A2 10  
 Material codes: A2 for Stainless Steel A2

**Material - plating**

Steel Class6 / Zinc 3Cr. Plated  
 Steel Class6 / Zinc Black 3Cr. Plated

**Material**

Stainless Steel A2

	Box q'ty	SIZE	
		s	m
M2	8000	4	1.6
M2.3	5000	4.5	1.8
M2.5	4000	5	2
M2.6	4000	5	2
M3	5000	5.5	2.4
M3.5	3500	6	2.8
M4	2500	7	3.2
M5	1500	8	4
M6	1500	10	5
M8	600	13	6.5
M10	300	17	8
M12	200	19	10
M16	100	24	13

	Box q'ty	SIZE	
		s	m
M2	8000	4	1.6
M2.3	5000	4.5	1.8
M2.5	4000	5	2
M3	2000	5.5	2.4
M4	1500	7	3.2
M5	1000	8	4
M6	500	10	5
M8	500	13	6.5
M10	300	17	8
M12	200	19	10
M16	100	24	13
M20	50	30	16
M22	100	32	18
M24	75	36	19



How to order or inquire: R830-B1181-2-material code diameter  
 Example: R830-B1181-2-316L10  
 Material codes: 316L for Stainless Steel 316L

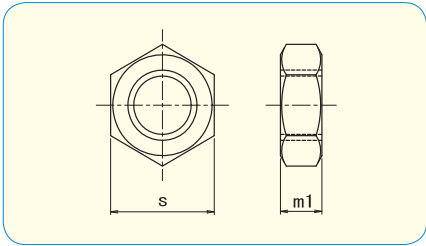
**Material**

**SUS 316L** Stainless Steel A4

	Box q'ty	SIZE	
		s	m
M8	100	13	6.5
M10	100	17	8
M12	100	19	10
M14	100	22	11
M16	100	24	13
M18	100	27	15
M20	100	30	16
M22	100	32	18
M24	100	36	19



# HEX NUT, JIS type 3 JIS B1181 appendix



How to order or inquire: R830-B1181-3-finish code diameter  
 Example: R830-B1181-3-CR3 10  
 Finish codes: CR3 for Zinc 3Cr. Plated, CR3B for Black 3Cr. Plated

How to order or inquire: R830-B1181-3-material code diameter  
 Example: R830-B1181-3-A2 10  
 Material codes: A2 for Stainless Steel A2

● **Material · plating**

Steel Class04 / Zinc 3Cr. Plated  
 Steel Class04 / Zinc Black 3Cr. Plated

● **Material**

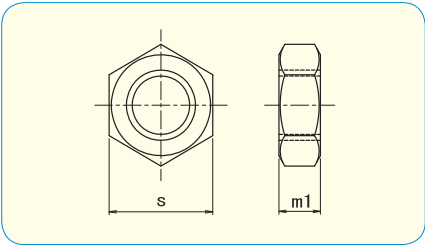
Stainless Steel A2

	Box q'ty	SIZE	
		s	m
M2	10000	4	1.2
M2.3	5000	4.5	1.4
M2.6	5000	5	1.6
M3	7000	5.5	1.8
M3.5	5000	6	2
M4	3500	7	2.4
M5	2000	8	3.2
M6	2000	10	3.6
M8	800	13	5
M10	400	17	6
M12	300	19	7
M14	200	22	8
M16	130	24	10
M20	70	30	12

	Box q'ty	SIZE	
		s	m
M2	10000	4	1.2
M3	3000	5.5	1.8
M4	2000	7	2.4
M5	1000	8	3.2
M6	2000	10	3.6
M8	800	13	5
M10	400	17	6
M12	300	19	7
M16	150	24	10
M20	80	30	12
M22	150	32	13
M24	110	36	14
M30	50	46	18



# HEX NUT, JIS type 3 JIS B1181 appendix



How to order or inquire: R830-B1181-3-material code diameter

Example: R830-B1181-3-316L10

Material codes: 316L for Stainless Steel 316L

**Material**

**SUS 316L** Stainless Steel A4

	Box q'ty	SIZE	
		s	m1
M6	100	10	3.6
M8	100	13	5
M10	100	17	6
M12	100	19	7
M14	100	22	8
M16	100	24	10
M18	100	27	11
M20	100	30	12
M22	100	32	13
M24	100	36	14

	Box q'ty	SIZE	
		s	m1
M27	100	41	16
M30	100	46	18
M33	100	50	20
M36	100	55	21
M39	100	60	23
M42	100	65	25
M45	100	70	27
M48	100	75	29
M52	100	80	31



How to order or inquire: R830-B1181-3-material code diameter

Example: R830-B1181-3-310 12

Material codes: 310 for Stainless Steel 310

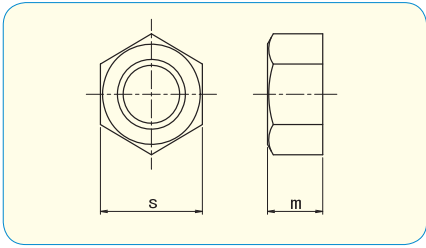
**Material**

**SUS 310S**  
Stainless Steel

	Box q'ty	SIZE	
		s	m1
M6	100	10	3.6
M8	100	13	5
M10	100	17	6
M12	100	19	7
M14	100	22	8
M16	100	24	10
M18	100	27	11
M20	100	30	12
M22	100	32	13
M24	100	36	14
M27	100	41	16
M30	100	46	18



# HEX NUT, height 1xd



How to order or inquire: R830-U5587-material code diameter  
 Example: R830-U5587-316L10  
 Material codes: 316L for Stainless Steel 316L

● **Material**

**SUS 316L** Stainless Steel A4

	Box q'ty	SIZE	
		s	m
M10	100	17	10
M12	100	19	12
M14	100	22	14
M16	100	24	16
M18	100	27	18
M20	100	30	20
M22	100	32	22
M24	100	36	24



How to order or inquire: R830-U5587-material code diameter  
 Example: R830-U5587-310 12  
 Material codes: 310 for Stainless Steel 310

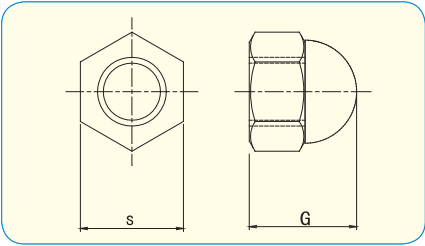
● **Material**

**SUS 310S**  
 Stainless Steel

	Box q'ty	SIZE	
		s	m
M8	100	13	8
M10	100	17	10
M12	100	19	12
M14	100	22	14
M16	100	24	16
M18	100	27	18
M20	100	30	20
M22	100	32	22
M24	100	36	24



## DOMED CAP NUT, JIS type 1-2 JIS B1183 appendix



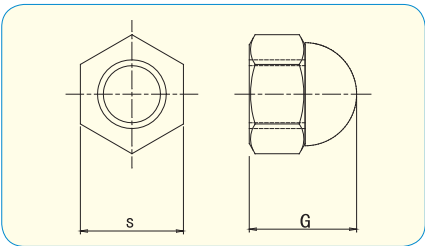
● **Material**  
Stainless Steel A2



How to order or inquire: R830-B1183-1-material code diameter  
Example: R830-B1183-1-A2 10  
Material codes: A2 for Stainless Steel A2

	Box q'ty	SIZE	
		s	G
M4	2000	7	9.5
M5	1000	8	11
M6	500	10	12
M8	500	13	15
M10	300	17	18
M12	200	19	22
M16	150	24	28

## DOMED CAP NUT, JIS type 3-2 JIS B1183 appendix



How to order or inquire: R830-B1183-3-material code diameter  
Example: R830-B1183-3-A2 10  
Material codes: A2 for Stainless Steel A2

● **Material**  
Stainless Steel A2

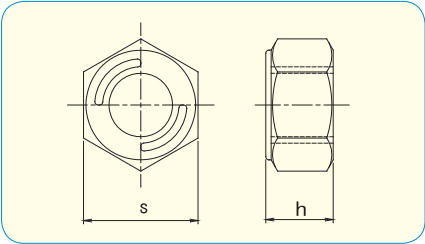
	Box q'ty	SIZE	
		s	G
M4	2000	7	6.2
M5	1000	8	7.5
M6	500	10	9.5
M8	500	13	12.5
M10	300	17	15.5
M12	200	19	18.5
M16	150	24	24
M20	100	30	29
M22	80	32	32.5
M24	50	36	35.5
M30	25	46	45

How to order or inquire: R830-B1183-3-material code diameter  
Example: R830-B1183-3-TI 10  
Material codes: TI for Titanium

● **Material**  
**TITAN**

	Box q'ty	SIZE	
		s	G
M6	500	10	9.5
M8	500	13	12.5
M10	300	17	15.5
M12	200	19	18.5

# HEX NUT w/Spring Lock



How to order or inquire: R830-980M-finish code diameter  
 Example: R830-980M-CR3 10  
 Finish codes: CR3 for Zinc 3Cr. Plated, CR3B for Black 3Cr. Plated

How to order or inquire: R830-980M-material code diameter  
 Example: R830-980M-A2 10  
 Material codes: A2 for Stainless Steel A2

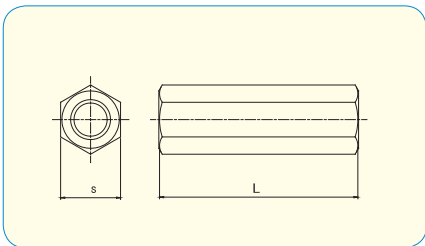
- **Material · plating**  
 Steel Class6 / Zinc 3Cr. Plated  
 Steel Class6 / Zinc Black 3Cr. Plated

	Box q'ty	SIZE	
		s	h
M3	8000	5.5	3.2
M4	4000	7	3.8
M5	2500	8	4.6
M6	1500	10	5.1
M8	1000	13	7.3
M10	600	17	8.3
M12	400	19	10.5
M14	250	22	12.5
M16	150	24	14.5

- **Material**  
 Stainless Steel A2

	Box q'ty	SIZE	
		s	h
M4	4000	7	3.8
M5	2500	8	4.6
M6	1500	10	5.1
M8	1000	13	7.3
M10	600	17	8.3
M12	400	19	10.5
M14	250	22	12.5
M16	150	24	14.5
M18	125	27	16
M20	120	30	17.5
M22	80	32	19.5
M24	65	36	21.5
M30	30	46	27

# HEX COUPLING NUT



- **Material**  
 Stainless Steel A2



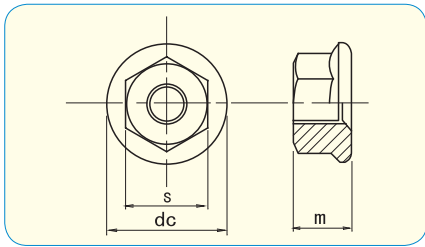
How to order or inquire: R830-6334J-material code diameter x length  
 Example: R830-6334J-A2 8x30  
 Material codes: A2 for Stainless Steel A2

	M6	M8	M10	M12	M16
s	10	13	17	19	24

pcs / Box

L \ d	M6	M8	M10	M12	M16
15	600				
20	450	250	150		
25	350	200	125	100	
30		175	100	85	50
40		125	75	60	35
50			60	50	30
60				40	30

# FLANGE NUT w/Serration



How to order or inquire: R830-HFNJ-finish code diameter  
 Example: R830-HFNJ-CR3 10  
 Finish codes: CR3 for Zinc 3Cr. Plated, CR3B for Black 3Cr. Plated

How to order or inquire: R830-HFNJ-material code diameter  
 Example: R830-HFNJ-A2 10  
 Material codes: A2 for Stainless Steel A2

● **Material - plating**

Steel Class6 / Zinc 3Cr. Plated  
 Steel Class6 / Zinc Black 3Cr. Plated

● **Material**

Stainless Steel A2

	Box q'ty	SIZE		
		s	m	dc
M3	1500	5.5	3.7	8
M4	1000	7	4.5	10
M5	500	8	5.5	12
M6	500	10	6	13
M8	500	12	7.5	17
M10	300	14	9	19
M12	170	17	11	24

	Box q'ty	SIZE		
		s	m	dc
M3	2000	5.5	3.7	8
M4	1000	7	4.5	10
M5	750	8	5.5	12
M6	500	10	6	13
M8	200	12	7.5	17
M10	150	14	9	19
M12	100	17	11	24

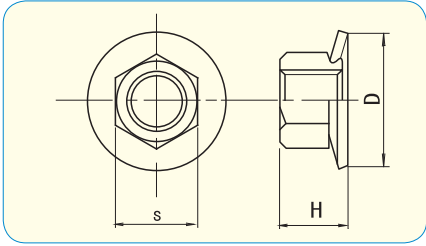
How to order or inquire: R830-HFNJ-material code diameter  
 Example: R830-HFNJ-TI 8  
 Material codes: TI for Titanium

● **Material**

**TITAN**

	Box q'ty	SIZE		
		s	m	dc
M3	2000	5.5	3.7	8
M4	1000	7	4.5	10
M5	750	8	5.5	12
M6	500	10	6	13
M8	200	12	7.5	17

## HEX NUT w/Conical Spring Washer



How to order or inquire: R830-1365J-finish code diameter  
 Example: R830-1365J-CR3 10  
 Finish codes: CR3 for Zinc 3Cr. Plated, CR3B for Black 3Cr. Plated

How to order or inquire: R830-1365J-material code diameter  
 Example: R830-1365J-A2 10  
 Material codes: A2 for Stainless Steel A2

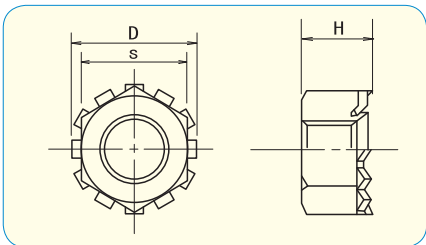
- **Material · plating**  
 Steel / Zinc 3Cr. Plated  
 Steel / Zinc Black 3Cr. Plated

- **Material**  
 Stainless Steel A2

	Box q'ty	SIZE		
		s	H	D
M3	5000	5.5	3.3	7
M4	2500	7	4.3	10
M5	1500	8	5.5	12
M6	700	10	6.7	14
M8	400	13	8.8	18
M10	200	17	10.7	22
M12	100	19		25

	Box q'ty	SIZE		
		s	H	D
M4	2000	7	4.3	10
M5	1000	8	5.5	12
M6	700	10	6.7	14
M8	300	13	8.8	18
M10	150	17	10.7	22

## HEX NUT w/Toothed Lock Washer



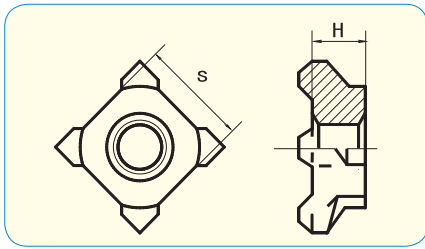
- **Material · plating**  
 Steel / Zinc 3Cr. Plated



How to order or inquire: R830-1364J-finish code diameter  
 Example: R830-1364J-CR3 10  
 Finish codes: CR3 for Zinc 3Cr

	Box q'ty	SIZE		
		s	H	D
M3	6000	5.5	3.2	6.5
M4	2500	7	4	8.2
M5	2000	8	5	9.5
M6	1000	10	6.2	11.5
M8	500	12		15

## SQUARE WELD NUT, JIS type 1D JIS B1196 appendix



How to order or inquire: R830-B1196D-finish code diameter  
 Example: R830-B1196D-CR3 10  
 Finish codes: CR3 for Zinc 3Cr. Plated, CR3B for Black 3Cr. Plated

How to order or inquire: R830-B1196D-material code diameter  
 Example: R830-B1196D-A2 10  
 Material codes: A2 for Stainless Steel A2

● **Material · plating**

Steel / Zinc 3Cr. Plated  
 Steel / Zinc Black 3Cr. Plated

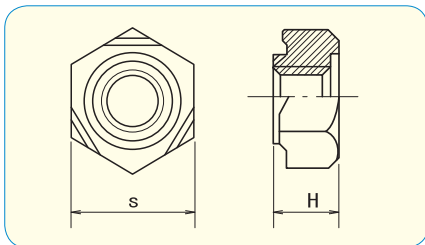
● **Material**

Stainless Steel A2

	Box q'ty	SIZE	
		s	H
M4	1000	8	3.2
M5	800	9	4
M6	500	10	5
M8	500	12	6
M10	200	14	8
M12	250	17	8

	Box q'ty	SIZE	
		s	H
M4	1000	8	3.2
M5	800	9	4
M6	500	10	5
M8	500	12	6
M10	400	14	8
M12	200	17	8

## HEX WELD NUT, JIS type 1A JIS B1196 appendix



How to order or inquire: R830-B1196A-finish code diameter  
 Example: R830-B1196A-CR3 10  
 Finish codes: CR3 for Zinc 3Cr. Plated, CR3B for Black 3Cr. Plated

How to order or inquire: R830-B1196A-material code diameter  
 Example: R830-B1196A-A2 10  
 Material codes: A2 for Stainless Steel A2

● **Material · plating**

Steel / Zinc 3Cr. Plated  
 Steel / Zinc Black 3Cr. Plated

● **Material**

Stainless Steel A2

	Box q'ty	SIZE	
		s	H
M4	1000	11	5
M5	1000	11	5
M6	700	13	6
M8	400	15	7.5
M10	300	17	9~10
M12	200	19	11~12

	Box q'ty	SIZE	
		s	H
M6	300	13	6
M8	300	15	7.5