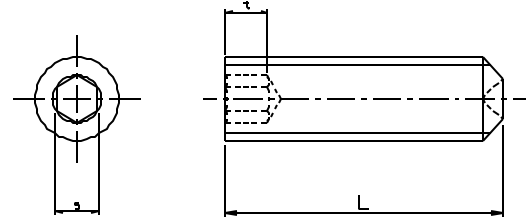


Due to present currency values the original 2002 prices shown in this chapter need to be multiplied by 1.5

HEX SOCKET SET SCREW CUP POINT
45H plain FINE THREAD
ISO 4029 / JIS B1177 / DIN 916



Please order this product by series number R830-DIN 916-DIAMETER X PITCH X LENGTH

Example: R830-DIN 916-M10X1.25X30

USD/100pcs

| | M6 | | M8 | | M10 | | M12 | | M14 | | M16 | |
|-------|------------|----------|------------|----------|------------|----------|------------|----------|------------|----------|------------|----------|
| Pitch | 0.75 | | 1.0 | | 1.25 | | 1.25 | | 1.5 | | 1.5 | |
| t | 3.5 | | 5 | | 6 | | 8 | | 9 | | 10 | |
| s | 3 | | 4 | | 5 | | 6 | | 6 | | 8 | |
| L | unit price | box q'ty | unit price | box q'ty | unit price | box q'ty | unit price | box q'ty | unit price | box q'ty | unit price | box q'ty |
| 5 | \$36.30 | 500 | | | | | | | | | | |
| 6 | \$30.30 | 500 | \$48.40 | 500 | | | | | | | | |
| 8 | \$30.30 | 500 | \$42.40 | 500 | \$72.60 | 500 | | | | | | |
| 10 | \$30.30 | 500 | \$42.40 | 500 | \$60.50 | 500 | \$109.00 | 500 | | | | |
| 12 | \$36.30 | 500 | \$48.40 | 500 | \$66.60 | 500 | \$90.80 | 200 | | | | |
| 14 | | | | | | | | | \$363.40 | 200 | | |
| 15 | \$42.40 | 500 | \$54.50 | 200 | \$72.60 | 200 | \$102.90 | 200 | \$363.40 | 200 | \$263.40 | 200 |
| 16 | | | | | | | | | | | \$235.80 | 200 |
| 20 | \$54.50 | 500 | \$66.60 | 200 | \$84.70 | 200 | \$121.00 | 200 | \$393.30 | 200 | \$263.40 | 100 |
| 25 | \$66.60 | 500 | \$90.80 | 200 | \$102.90 | 200 | \$151.30 | 200 | \$423.20 | 100 | \$254.20 | 100 |
| 30 | \$78.70 | 200 | \$121.00 | 200 | \$127.10 | 100 | \$181.60 | 100 | \$454.30 | 100 | \$296.70 | 100 |
| 35 | | | \$151.30 | 200 | \$151.30 | 100 | \$242.10 | 100 | \$545.10 | 100 | \$363.40 | 50 |
| 40 | | | \$181.60 | 200 | \$181.60 | 100 | \$302.50 | 100 | \$604.90 | 100 | \$423.20 | 50 |
| 45 | | | \$211.80 | 100 | \$211.80 | 100 | \$363.40 | 100 | \$665.90 | 50 | \$484.20 | 50 |
| 50 | | | \$242.10 | 100 | \$242.10 | 100 | \$423.20 | 100 | \$726.80 | 40 | \$545.10 | 50 |
| 55 | | | | | | | \$484.20 | 100 | \$786.60 | 40 | \$604.90 | 50 |
| 60 | | | | | | | \$545.10 | 50 | \$847.60 | 50 | \$665.90 | 50 |

MARYLAND METRICS

phones: (410)358-3130 (800)638-1830 faxes: (410)358-3142 (800)872-9329

URL: <http://mdmetric.com> E-mail: techinfo@mdmetric.com

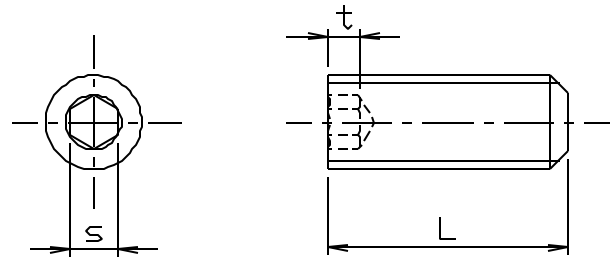
P.O.Box 261 Owings Mills, MD 21117 USA

FASTENER CATALOG - CHAPTER S2

Many items in this chapter are not stocked in the US. Please allow adequate lead time for delivery and factory minimum order requirements.

Due to present currency values the original 2002 prices shown in this chapter need to be multiplied by 1.5

HEX SOCKET SET SCREW FLAT POINT
45H plain FINE THREAD
ISO 4026 / JIS B1177 / DIN 913



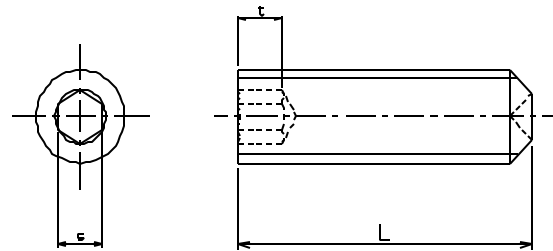
Please order this product by series number R830-DIN 913-DIAMETER X PITCH X LENGTH

Example: R830-DIN 913-M10X1.25X30

USD/100pcs

| | M6 | | M8 | | M10 | | M12 | | M14 | | M16 | |
|-------|------------|----------|------------|----------|------------|----------|------------|----------|------------|----------|------------|----------|
| Pitch | 0.75 | | 1.0 | | 1.25 | | 1.25 | | 1.5 | | 1.5 | |
| t | 3.5 | | 5 | | 6 | | 8 | | 9 | | 10 | |
| s | 3 | | 4 | | 5 | | 6 | | 6 | | 8 | |
| L | unit price | box q'ty | unit price | box q'ty | unit price | box q'ty | unit price | box q'ty | unit price | box q'ty | unit price | box q'ty |
| 5 | \$36.30 | 500 | | | | | | | | | | |
| 6 | \$30.30 | 500 | \$48.40 | 500 | | | | | | | | |
| 8 | \$30.30 | 500 | \$42.40 | 500 | \$72.60 | 500 | | | | | | |
| 10 | \$30.30 | 500 | \$42.40 | 500 | \$60.50 | 500 | \$109.00 | 500 | | | | |
| 12 | \$36.30 | 500 | \$48.40 | 500 | \$66.60 | 500 | \$90.80 | 200 | | | | |
| 14 | | | | | | | | | \$363.40 | 200 | | |
| 15 | \$42.40 | 500 | \$54.50 | 200 | \$72.60 | 200 | \$102.90 | 200 | \$363.40 | 200 | \$263.40 | 200 |
| 16 | | | | | | | | | | | \$235.80 | 200 |
| 20 | \$54.50 | 500 | \$66.60 | 200 | \$84.70 | 200 | \$121.00 | 200 | \$393.30 | 200 | \$263.40 | 100 |
| 25 | \$66.60 | 500 | \$90.80 | 200 | \$102.90 | 200 | \$151.30 | 200 | \$423.20 | 100 | \$254.20 | 100 |
| 30 | \$78.70 | 200 | \$121.00 | 200 | \$127.10 | 100 | \$181.60 | 100 | \$454.30 | 100 | \$296.70 | 100 |
| 35 | | | \$151.30 | 200 | \$151.30 | 100 | \$242.10 | 100 | \$545.10 | 100 | \$363.40 | 50 |
| 40 | | | \$181.60 | 200 | \$181.60 | 100 | \$302.50 | 100 | \$604.90 | 100 | \$423.20 | 50 |
| 45 | | | \$211.80 | 100 | \$211.80 | 100 | \$363.40 | 100 | \$665.90 | 50 | \$484.20 | 50 |
| 50 | | | \$242.10 | 100 | \$242.10 | 100 | \$423.20 | 100 | \$726.80 | 40 | \$545.10 | 50 |
| 55 | | | | | | | \$484.20 | 100 | \$786.60 | 40 | \$604.90 | 50 |
| 60 | | | | | | | \$545.10 | 50 | \$847.60 | 50 | \$665.90 | 50 |

HEX SOCKET SET SCREW CUP POINT
stainless A2 FINE THREAD
ISO 4029 / JIS B1177 / DIN 916



| | M4 | M5 | M6 | M8 | M10 |
|---|-----|-----|-----|----|-----|
| t | 2.5 | 3 | 3.5 | 5 | 6 |
| s | 2 | 2.5 | 3 | 4 | 5 |

Please order this product by series number R830-DIN 916A2-DIAMETER X PITCH X LENGTH

Example: R830-DIN 916A2-M10X1.25X30

USD/100pcs

| | M4 | | M5 | | M6 | | M8 | | M10 | |
|----------|----------|------------|----------|------------|----------|------------|----------|------------|----------|------------|
| Pitch | P0.5 | | P0.5 | | 0.75 | | 1.0 | | 1.25 | |
| box q'ty | 1 | | 1 | | 1 | | 1 | | 1 | |
| L | 1-49 pcs | 50 & above | 1-49 pcs | 50 & above | 1-49 pcs | 50 & above | 1-49 pcs | 50 & above | 1-49 pcs | 50 & above |
| 4 | \$140.00 | \$105.00 | | | | | | | | |
| 5 | \$140.00 | \$105.00 | \$140.00 | \$105.00 | | | | | | |
| 6 | \$140.00 | \$105.00 | \$140.00 | \$105.00 | \$158.00 | \$123.00 | | | | |
| 8 | \$140.00 | \$105.00 | \$140.00 | \$105.00 | \$158.00 | \$123.00 | \$228.00 | \$193.00 | | |
| 10 | \$140.00 | \$105.00 | \$140.00 | \$105.00 | \$158.00 | \$123.00 | \$228.00 | \$193.00 | | |
| 12 | | | \$140.00 | \$105.00 | \$158.00 | \$123.00 | \$228.00 | \$193.00 | \$263.00 | \$210.00 |
| 15 | | | \$140.00 | \$105.00 | \$158.00 | \$123.00 | \$245.00 | \$210.00 | \$280.00 | \$228.00 |
| 20 | | | | | \$158.00 | \$123.00 | \$245.00 | \$210.00 | \$280.00 | \$228.00 |
| 25 | | | | | | | \$245.00 | \$210.00 | \$298.00 | \$245.00 |
| 30 | | | | | | | | | \$298.00 | \$245.00 |