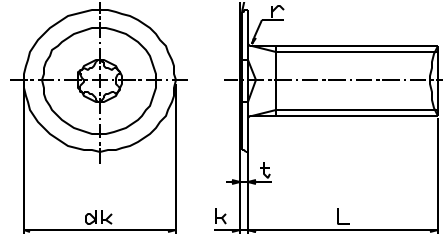


EXTRA-LOW HEAD SCREWS, 6-lobe

See Chapter S6 for SH (SlimHead) pricing and additional SH products

d		M3	M4	M5
p		0.5	0.7	0.8
dk		7	8	9
k		0.8	0.9	1
r		0.4 max	0.5 max	0.6 max
t (min)		0.75	0.9	1
drive		T6	T8	T10
MAX tightening torque		0.95N.m	2.3N.m	4N.m



Please order this product by part number. See Chapter S6 for SH pricing

Please order this product by part number. See Chapter S6 for SH pricing

steel Nickel plated

USD/100pcs

steel black Nickel plated

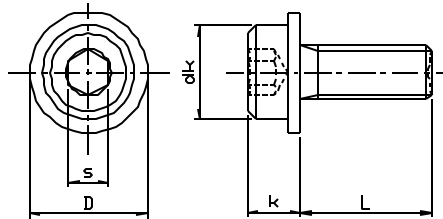
USD/100pcs

SIZE	PART #	box q'ty		
M3x6	R830-SH010306Ni	100		
	R830-SH010308Ni	100		
	R830-SH010310Ni	100		
M4x6	R830-SH010406Ni	100		
	R830-SH010408Ni	100		
	R830-SH010410Ni	100		
M5x8	R830-SH010508Ni	100		
	R830-SH010510Ni	100		
	R830-SH010512Ni	100		
	R830-SH010516Ni	100		

SIZE	PART #	box q'ty		
M3x6	R830-SH010306BNi	100		
8	R830-SH010308BNi	100		
10	R830-SH010310BNi	100		
M4x6	R830-SH010406BNi	100		
	R830-SH010408BNi	100		
	R830-SH010410BNi	100		
M5x8	R830-SH010508BNi	100		
	R830-SH010510BNi	100		
	R830-SH010512BNi	100		
	R830-SH010516BNi	100		

HEX SOCKET CAP SCREW WITH FLANGE
stainless A2

	M4	M5	M6	M8
dk	7	8.5	10	13
k	4	5	6	8
s	3	4	5	6
D	9	11	12.5	17



Please order this product by series number R830-S2-SCF-A2-SIZE

Example: R830-S2-SCF-A2-4x6

L	M4		M5		M6		M8	
	unit price	box q'ty	unit price	box q'ty	unit price	box q'ty	unit price	box q'ty
6	call us	100	call us	100				
8	call us	100	call us	100	call us	100		
10	call us	100	call us	100	call us	100	call us	100
12	call us	100	call us	100	call us	100	call us	100
15	call us	100	call us	100	call us	100	call us	100
16	call us	100	call us	100	call us	100	call us	100
20	call us	100	call us	100	call us	100	call us	100
25			call us	100	call us	100	call us	100
30							call us	100

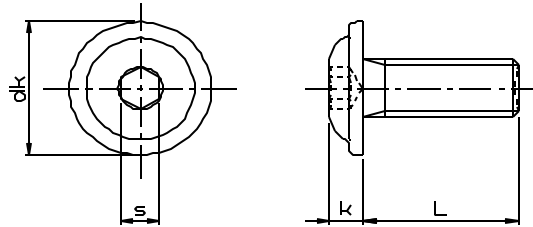
ver gg14l

MARYLAND METRICS
 phones: (410)358-3130 (800)638-1830 faxes: (410)358-3142 (800)872-9329
 URL: <http://mdmetric.com> E-mail: techinfo@mdmetric.com
 P.O.Box 261 Owings Mills, MD 21117 USA
FASTENER CATALOG - CHAPTER S2

Many items in this chapter are not stocked in the US. Please allow adequate lead time for delivery and factory minimum order requirements.

HEX SOCKET BUTTON HEAD SCREW WITH FLANGE
stainless A2

	M3	M4	M5	M6	M8
dk	7	9.2	11.4	13.6	17
k	1.65	2.2	2.75	3.3	4.4
s	2	2.5	3	4	5



Please order this product by series number R830-S2-BSCF-A2-SIZE

Example: R830-S2-BSCF-A2-4x6

USD/100pcs

	M3		M4		M5		M6		M8	
L	unit price	box q'ty	unit price	box q'ty	unit price	box q'ty	unit price	box q'ty	unit price	box q'ty
5	call us	1,000								
6	call us	1,000	call us	1,000						
8	call us	1,000	call us	1,000	call us	1,000	call us	500		
10	call us	1,000	call us	1,000	call us	1,000	call us	500		
12	call us	1,000	call us	1,000	call us	1,000	call us	500	call us	200
15	call us	1,000	call us	1,000	call us	500	call us	500	call us	200
16	call us	1,000	call us	1,000	call us	500	call us	500	call us	200
20	call us	1,000	call us	1,000	call us	500	call us	500	call us	200
25				1,000	call us	500	call us	500	call us	200
30							call us	500	call us	200

MARYLAND METRICS
 phones: (410)358-3130 (800)638-1830 faxes: (410)358-3142 (800)872-9329
 URL: <http://mdmetric.com> E-mail: techinfo@mdmetric.com
 P.O.Box 261 Owings Mills, MD 21117 USA
FASTENER CATALOG - CHAPTER S2

Many items in this chapter are not stocked in the US. Please allow adequate lead time for delivery and factory minimum order requirements.