

**RENY (Glassfiber Reinforced PolyamideMXD6)  
HEX SOCKET CAP SCREW**

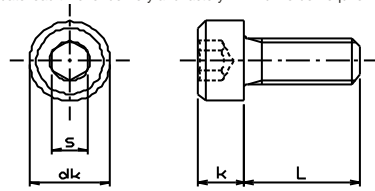
**MARYLAND METRICS**

phones: (410)358-3130 (800)638-1830 faxes: (410)358-3142 (800)872-9329  
URL: <http://mdmetric.com> E-mail: [techinfo@mdmetric.com](mailto:techinfo@mdmetric.com)  
P.O.Box 261 Owings Mills, MD 21117 USA

**FASTENER CATALOG - CHAPTER S3**

Many items in this chapter are not stocked in the US. Please allow adequate lead time for delivery and factory minimum order requirements.

	M3	M4	M5	M6	M8
dk	5.5	7	8.5	10	13
k	3	4	5	6	8
s	2.5	3	4	5	6



Please order this product by series number R830-912RNY-DIAMETER x LENGTH

Example: R830-912RNY-M4x10

black color

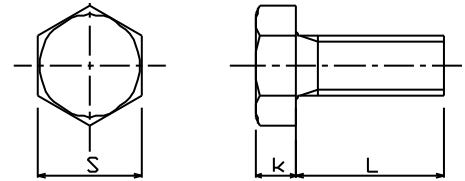
USD/100pcs

L	M3		M4		M5		M6		M8	
	unit price	box q'ty	unit price	box q'ty	unit price	box q'ty	unit price	box q'ty	unit price	box q'ty
6	\$29.40	1,000	\$35.10	1,000						
8	\$31.20	1,000	\$36.00	1,000						
10	\$33.30	1,000	\$37.20	1,000	\$39.00	500	\$42.90	500		
12	\$35.10	1,000	\$39.00	1,000	\$41.10	500			\$70.20	250
15	\$37.20	1,000	\$42.90	1,000	\$42.90	500	\$48.90	500	\$78.00	200
20	\$39.00	1,000	\$46.80	500	\$46.80	500	\$54.60	250	\$92.10	200
25					\$62.40	250	\$62.40	250	\$97.50	100
30					\$109.20	250	\$70.20	200	\$109.20	100
35					\$117.00	250	\$101.40	200	\$117.00	100
40							\$144.30	100	\$128.70	100

copyright 2002 maryland metrics

**RENY (Glassfiber Reinforced PolyamideMXD6)  
HEX CAP SCREW**

	M5	M6	M8	M10	M12	M16
s	8	10	13	17	19	24
k	3.5	4	5.5	7	8	13
k with* mark	-	5	6	8	10	-



Please order this product by series number R830-933RNY-DIAMETER x LENGTH

Example: R830-933RNY-M4x10

USD/100pcs

L	M5		M6		M8		M10		M12		M16	
	unit price	box q'ty	unit price	box q'ty	unit price	box q'ty	unit price	box q'ty	unit price	box q'ty	unit price	box q'ty
10	\$16.80	1,000	\$35.10	500	\$58.50	250						
12			\$37.50	500			\$152.10	100				
15	\$24.30	500	\$41.40	500	\$61.80	200	\$152.10	100				
20	\$29.70	500	\$45.90	250	\$66.30	200	\$152.10	100	\$257.40	50		
25			\$48.60	250	\$77.40	100	\$152.10	100	\$257.40	50		
30			\$59.40	250	\$90.30	100	\$159.90	50	\$273.00	50		
35	\$72.30	250	\$99.60	200	\$117.00	100	\$163.80	50				
40	\$93.60	250	\$140.40	200	\$120.90	100	\$175.50	50	\$280.80	50		
45									\$288.60	50		
50			\$249.60	100	\$187.20	50	\$257.40	50	\$292.50	50	\$421.20	50
55			\$265.20	100*	\$296.40	50*					\$452.40	50
60			\$280.80	100*	\$304.20	50*	\$319.80	50*	\$327.60	50	\$452.40	50
65			\$296.40	100*	\$312.00	50*						
70			\$312.00	100*	\$323.70	50*	\$335.40	50*	\$351.00	50	\$510.90	50
75			\$327.60	100*	\$347.10	50*	\$362.70	50*				
80			\$343.20	100*	\$358.80	50*	\$375.00	50*	\$421.20	50*	\$549.90	50
90			\$374.40	100*	\$390.00	50*						
100			\$405.60	50*	\$417.30	50*	\$429.00	50*	\$471.90	50*	\$655.20	50
120					\$448.50	50*			\$526.50	50*		
150					\$565.50	50*	\$577.20	50*	\$682.50	50*	\$877.50	50

note 1: M8x50 and M10x50 are partial thread. (thread length: 25mm)

note 3: M12x90 - 150 are partial thread (thread length: 90mm)

note 2: M6x55 - 100, M8x55 - 100, M10x60 - 150 and all of M16 are partial thread (thread length: 50mm)

Due to present currency values, raw material costs & fuel surcharges, the original 2002 prices shown in this chapter need to be multiplied by 2.5

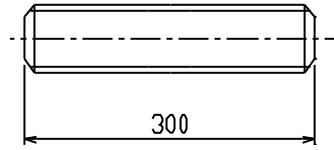
**RENY (Glassfiber Reinforced PolyamideMXD6)  
THREADED RODS**

Please order this product by series number R830-975RNY-DIAMETER x LENGTH

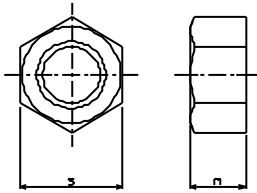
Example: R830-976RNY-M8x300

USD/100pcs

	M8	M10	M12	M16	W3/8
pitch	1.25	1.5	1.75	2	
box q'ty	1	1	1	1	1
USD/100pcs	2,100	2,400	2,700	3,900	2,400

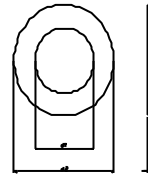


**RENY (Glassfiber Reinforced PolyamideMXD6)  
HEX NUT**



**RENY (Glassfiber Reinforced PolyamideMXD6)**

**ROUND WASHER**



Please order this product by series number R830-555RNY-DIAMETER

Example: R830-555RNY-M4

USD/100pcs

	s	m	box q'ty	1-9 box	10 & above
M2	4	1.6	1,000	\$39.00	call us
M2.6	5	2	1,000	\$39.00	call us
M3	5.5	2.4	1,000	\$14.70	call us
M4	7	3.2	1,000	\$15.30	call us
M5	8	4	1,000	\$22.50	call us
M6	10	5	500	\$24.30	call us
M8	13	6.5	250	\$30.60	call us
M10	17	8	200	\$54.60	call us
M12	19	10	100	\$81.90	call us
M16	24	18	50	\$273.00	call us

Please order this product by series number R830-125RNY-DIAMETER

Example: R830-125RNY-M4

USD/100pcs

	d2	t	box q'ty	1-9 box	10 & above
M3	7	0.5	1,000	\$12.00	call us
M4	9	0.8	1,000	\$15.00	call us
M5	10	1	1,000	\$18.00	call us
M6	12.5	1.6	1,000	\$21.00	call us
M8	17	1.6	500	\$36.00	call us
M10	21	2	500	\$42.00	call us
M12	24	2.5	500	\$51.00	call us

**MARYLAND METRICS**

phones: (410)358-3130 (800)638-1830 faxes: (410)358-3142 (800)872-9329

URL: <http://mdmetric.com> E-mail: [techinfo@mdmetric.com](mailto:techinfo@mdmetric.com)

P.O.Box 261 Owings Mills, MD 21117 USA

**FASTENER CATALOG - CHAPTER S3**

Many items in this chapter are not stocked in the US. Please allow adequate lead time for delivery and factory minimum order requirements.

Due to present currency values, raw material costs & fuel surcharges, the original 2002 prices shown in this chapter need to be multiplied by 2.5

**RENY (Glassfiber Reinforced PolyamideMXD6)  
PHILLIPS PAN HEAD MACHINE SCREW**

	M1.7	M2	M2.6	M3	M4	M5	M6	M8
dk	2.5	3.5	4.5	5.5	7	9	10.5	14
k	0.5	1.3	1.7	2	2.6	3.3	3.9	5.2

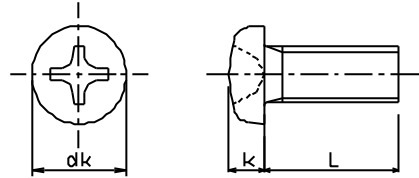
Please order this product by series number R830-B1111RNY-DIAMETER x LENGTH

Example: R830-B1111RNY-M4x10

USD/100pcs

L	M1.7		M2		M2.6	
	unit price	box q'ty	unit price	box q'ty	unit price	box q'ty
3			\$8.70	1,000		
4	\$15.60	1,000	\$8.70	1,000		
5			\$8.70	1,000		
6			\$9.00	1,000	\$8.70	1,000
8			\$9.00	1,000	\$9.00	1,000
10			\$9.90	1,000	\$10.50	1,000
12			\$10.50		\$10.50	1,000

\* M1.7: black color

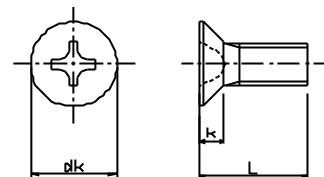


USD/100pcs

L	M3		M4		M5		M6		M8	
	unit price	box q'ty	unit price	box q'ty	unit price	box q'ty	unit price	box q'ty	unit price	box q'ty
4	\$8.70	1,000								
5	\$8.70	1,000	\$10.50	1,000						
6	\$8.70	1,000	\$10.50	1,000						
8	\$9.00	1,000	\$11.70	1,000	\$15.60	1,000				
10	\$9.90	1,000	\$12.30	1,000	\$16.80	1,000	35.1	500		
12	\$10.50	1,000	\$15.30	1,000	\$20.40	1,000	37.5	500	58.5	250
15	\$15.30	1,000	\$20.40	1,000	\$24.30	500	41.4	500		
16	\$19.50	1,000	\$20.70	1,000						
20	\$20.10	1,000	\$22.50	1,000	\$29.70	500		250		200
25	\$26.40	1,000	\$32.70	500	\$42.30	500	45.9	250	66.3	200
30	\$36.90	1,000	\$39.60	500	\$72.30	250	48.6	250	77.4	100
35					\$93.60	250	59.4		90.3	

**RENY (Glassfiber Reinforced PolyamideMXD6)  
PHILLIPS FLAT HEAD MACHINE SCREW**

	M2	M2.6	M3	M4	M5	M6	M8
dk	4	5.2	6	8	10	12	16
k	1.2	1.5	1.75	2.3	2.8	3.4	4.4



Please order this product by series number R830-B1111FH/RNY-DIAMETER x LENGTH

M2.6 also available. Please inquire.

Example: R830-B1111FH/RNY-M4x10

L	M2		M3		M4		M5		M6		M8	
	unit price	box q'ty	unit price	box q'ty	unit price	box q'ty	unit price	box q'ty	unit price	box q'ty	unit price	box q'ty
5			\$8.70	1,000								
6	\$24.00	1,000	\$8.70	1,000	\$10.50	1,000						
8	\$24.00	1,000	\$9.00	1,000	\$11.70	1,000						
10			\$9.90	1,000	\$12.30	1,000	\$16.80	1,000	\$35.10	500		
12			\$10.50	1,000	\$15.30	1,000	\$20.40	1,000	\$37.50	500		
15			\$15.30	1,000	\$20.40	1,000	\$24.30	500	\$41.40	500	61.8	250
20			\$20.10	1,000	\$22.50	1,000	\$29.70	500	\$45.90	250	66.3	200
25			\$26.40	1,000	\$32.70	500	\$42.30	500	\$48.60	250	77.4	200
30									\$59.40	250	90.3	100

**MARYLAND METRICS**  
phones: (410)358-3130 (800)638-1830 faxes: (410)358-3142 (800)872-9329  
URL: <http://mdmetric.com> E-mail: [techinfo@mdmetric.com](mailto:techinfo@mdmetric.com)  
P.O.Box 261 - Queens Mills, MD 21117 USA  
**FASTENER CATALOG - CHAPTER S3**

Many items in this chapter are not stocked in the US. Please allow adequate lead time for delivery and factory minimum order requirements.