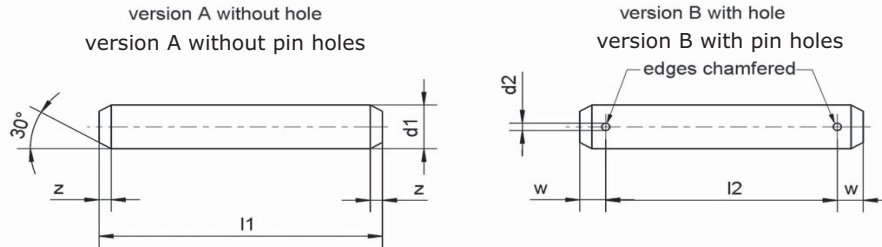


**Cotter bolts (clevis pins)**

according to DIN 1443, according to DIN EN 22340, according to ISO 2340

**Example for ordering: Version A:** without pin holes, bolt acc. to DIN 1443 10  $\emptyset$  h11 x 30

Order number: 43 10 0000 0030

**Version B:** with pin holes, bolt acc. to DIN 1443 10  $\emptyset$  h11 x 30 x 21

Order number: 43 10 0030 0021



$\emptyset$ d1 h 11	5	6	8	10	12	14	16	18	20	22	24	up to 100	
$\emptyset$ d2 H 13	1.2	1.6	2	3.2	3.2	4	4	5	5	5	6.3		
w	2.9	3.2	3.5	4.5	5.5	6	6	7	8	8	9		
z max.	2	2		2	3	3	3	3	4	4	4		
l1	Weight (7.85 kg/dm <sup>3</sup> ) kg/1000 pieces												
6													upon request
8													
10	1.3												
12	1.61	2.3											
14	1.92	2.74											
16	2.13	3.19	5.8										
(18)	2.44	3.63	6.6										
20	2.75	4.08	7.4	11									
(22)	3.16	4.52	8.2	12.2									
25	3.62	5.19	9.4	14	20								
(28)	4.08	5.85	10.6	15.9	22.7								
30	4.39	6.29	11.4	17.1	24.5	34							
35	5.18	7.4	13.4	20.2	28.9	40	50						
40	5.85	8.51	15.4	23.3	33.3	46	57.9	72	90				
45	6.62	9.62	17.4	26.4	37.7	52.1	65.8	82	102	125			
50	7.39	10.7	19.4	29.5	42.1	58.1	73.7	92	114	140	160		
55		11.8	21.4	32.6	46.6	64.2	81.6	102	127	155	178		
60		12.9	23.4	35.7	51	70.2	89.5	112	139	170	196		
65			25.4	38.8	55.5	76.3	97.4	122	151	185	214		
70			27.4	41.9	60	82.3	105	132	163	200	232		
75			29.4	45	64.4	88.4	113	142	175	215	250		
80			31.4	48.1	68.9	94.4	121	152	187	230	268		
85				51.2	73.3	101	129	162	210	245	284		
90				54.3	77.8	107	137	172	222	260	302		
(95)				57.4	82.2	113	145	182	235	275	320		
100				60.5	86.7	119	153	192	247	290	338		
up to 200	upon request												

**Material:**

1.0718 (11SMnPb30+C)

alternative: stainless steel 1.4305 (X8CrNiS18-9)

alternative: hardened bolts upon request

**Surface protection:**

as standard polished; optional: electroplated galvanized (silver/clear or yellow) or phosphatized

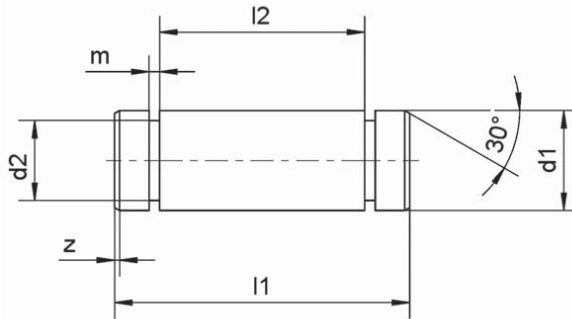
**Retaining:**

with retainers (mbo catalog section 14) or washer and cotter pin

**Customized products of any kind possible; please let us know your requirements**

### Bolts (clevis pins)

similar DIN 1443/DIN EN 22340/ISO 2340 with groove



**ø d1 4 mm - ø 42 mm**  
**length l1 10 mm - 150 mm**

#### Material:

1.0718 (11SMnPb30+C)

alternative: stainless steel 1.4305 (X8CrNiS18-9)

alternative: hardened bolts upon request



#### Surface protection:

phosphatized and oiled,

optional: electroplated galvanized, passivated in white-blue (silver/clear) or yellow

#### Special version:

According to length, tolerance and material upon request

#### Retaining:

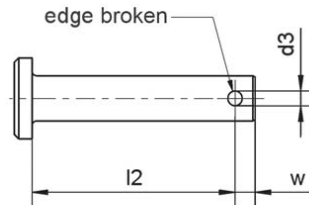
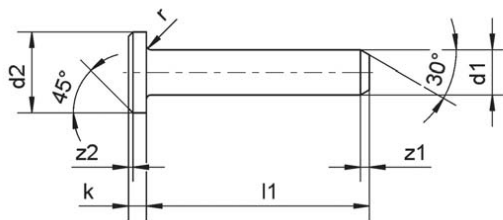
with retainers (mbo catalog section 13)

12\_02  
01/2007

**Bolts (clevis pins)** similar DIN 1444/DIN EN 22341/ISO 2341 with groove

version A without hole

version B with hole



**Example for ordering: Version A:** without pin hole, bolt acc. to DIN 1444 10  $\emptyset$  h11 x 50  
Order number: 44 10 0000 0050

**Version B:** with pin hole, bolt acc. to DIN 1444 10  $\emptyset$  h11 x 50 x 45.5  
Order number: 44 10 0050 0455

$\emptyset$ d1h11	6	8	10	12	14	up to 100
$\emptyset$ d2h14	10	14	18	20	22	
$\emptyset$ d3h13	1.6	2	3.2	3.2	4	
k js 14	2	3	4	4	4	
$\approx r$	0.6	0.6	0.6	0.6	0.6	
w	3.2	3.5	4.5	5.5	6	
z1 max.	2	2	2	3	3	
z2 $\approx$	1	1	1	1.6	1.6	
l1	All sizes upon request					
16						
(18)						
20						
(22)						
25						
(28)						
30						
35						
40						
45						
50						
55						
up to 200						

**Material:**

1.0718 (11SMnPb30+C)

1.0214 (QSt 36-3) at manufacturer's choice

alternative: stainless steel 1.4305 (X8CrNiS18-9)

1.4567 (X3CrNiCu18-9-4)

alternative: hardened bolts upon request

**Surface protection:**

as standard polished

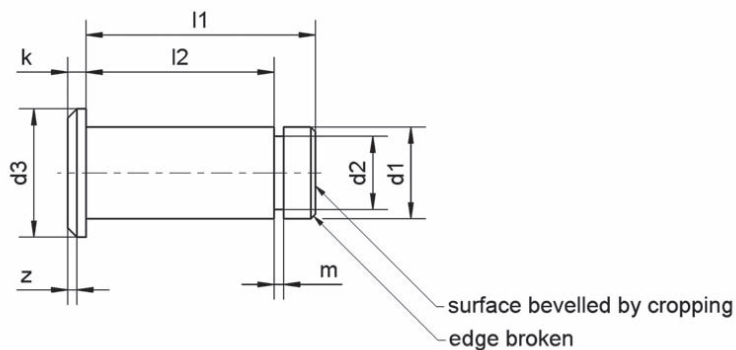
optional: electroplated, galvanized (silver/clear) or phosphatized

12\_03  
01/2007**Retaining:**

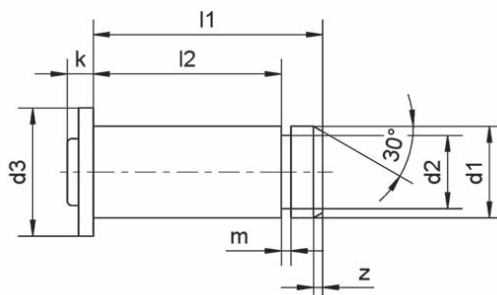
with retainers (mbo catalog section 14) or washer and cotter pin

**Customized products of any kind possible; please let us know your requirements**

**Bolts (clevis pins)** similar DIN 1444/DIN EN 22341/ISO 2341 with groove



head version at manufacturer's choice



$\varnothing d1$  4 mm -  $\varnothing$  42 mm  
length  $l1$  10 mm - 150 mm

**Material:**

1.0718 (11SMnPb30+C)  
1.0214 (QSt 36-3) at manufacturer's choice

alternative: stainless steel 1.4305 (X8CrNiS18-9)  
1.4567 (X3CrNiCu18-9-4)

alternative: hardened bolts upon request



**Surface protection:**

phosphatized and oiled,  
optional: electroplated galvanized, passivated in white-blue (silver/clear) or yellow

**Special version:**

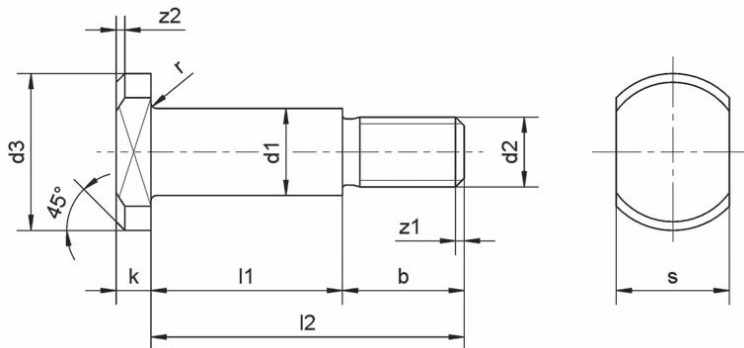
as to length, tolerance and material upon request

**Retaining:**

with retainers (mbo catalog section 13)

12\_04  
01/2007

## Bolts (clevis pins) with head and spigot DIN 1445



Example for ordering:

Bolt with a diameter of  $d1 = 12$  mm, tolerance range h11, grip  $l1 = 30$  mm and length  $l2 = 50$  mm, of 11SMnPb30+C

Identifier: Bolt DIN 1445 – 12 h11 x 30 x 50 – St

Our manufacturing options:

$d1$  from  $\varnothing 8$  -  $\varnothing 27$  mm  
 $l2$  to 80 mm

### Material:

1.0718 (11SMnPb30+C)

alternative: stainless steel 1.4305 (X8CrNiS18-9)



### Surface protection:

phosphatized and oiled;

optional: electroplated galvanized, passivated in white-blue or yellow

### Special version:

according to length, tolerance and material upon request

12\_05  
01/2007