



## Tamper-Evident Safety Clip

Secure Your Connections  
on the LF 3000 Ranges

aerospace  
climate control  
electromechanical  
filtration  
fluid & gas handling  
hydraulics  
**pneumatics**  
process control  
sealing & shielding



### **Parker Legris connectic**

products are available from

#### **MARYLAND METRICS**

P.O. Box 261 Owings Mills, MD 21117 USA

ph: (410)358-3130 (800)638-1830

fx: (410)358-3142 (800)872-9329

email: [sales@mdmetric.com](mailto:sales@mdmetric.com) web: <http://mdmetric.com>

RFQ form: <http://mdmetric.com/rfq.htm>

**ENGINEERING YOUR SUCCESS.**

# Tamper-Evident Safety Clip

A solution that makes tampering obvious and warns that:

- The application is sensitive and that disconnection could endanger persons and goods

The clip must be cut with pliers to disconnect the tube

- Limiting this operation to workers with a toolbox, and thus reinforcing the warning about disconnection

Evidence of tampering is apparent after disconnection

- But the clip maintains its safety function

Colour-coding enables fluid circuit identification

- 6 colours

Several compatible ranges of instant fittings:

- LF 3000 instant fittings ■ LIQUIfit instant fittings ■ Pneumatic function fittings



## > Technical Characteristics

Temperature range	from -20°C to +150°C from -4°F to +302°F
Fluid Compatibility	Air, grease, cleaning agents
Materials	Technical polymer

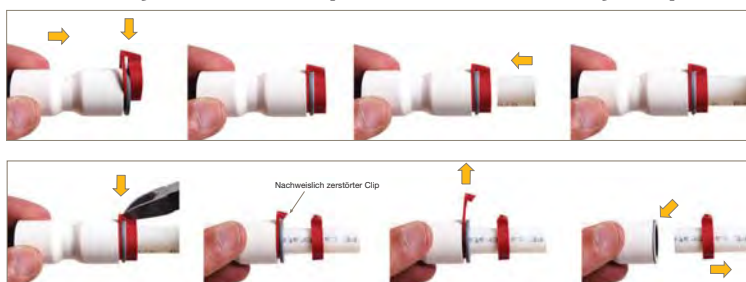
### 3130 Tamper-Evident Safety Clip for Metric Tubes

ØD							H (mm)	K (mm)	
4	3130 04 01	3130 04 02	3130 04 03	3130 04 04	3130 04 05	3130 04 10	6,6	3	0,001
6	3130 06 01	3130 06 02	3130 06 03	3130 06 04	3130 06 05	3130 06 10	7,8	3,1	0,001
8	3130 08 01	3130 08 02	3130 08 03	3130 08 04	3130 08 05	3130 08 10	9,5	4,3	0,003
10	3130 10 01	3130 10 02	3130 10 03	3130 10 04	3130 10 05	3130 10 10	10,8	4,2	0,003
12	3130 12 01	3130 12 02	3130 12 03	3130 12 04	3130 12 05	3130 12 10	12,5	5,1	0,005

### 3130 Tamper-Evident Safety Clip for Inch Tubes

ØD							H (mm)	K (mm)	
5/32	3130 04 01	3130 04 02	3130 04 03	3130 04 04	3130 04 05	3130 04 10	6,6	3	0,001
1/4	3130 56 01	3130 56 02	3130 56 03	3130 56 04	3130 56 05	3130 56 10	8	3,2	0,001
5/16	3130 08 01	3130 08 02	3130 08 03	3130 08 04	3130 08 05	3130 08 10	9,5	4,3	0,003
3/8	3130 60 01	3130 60 02	3130 60 03	3130 60 04	3130 60 05	3130 60 10	10,8	4,2	0,003
1/2	3130 62 01	3130 62 02	3130 62 03	3130 62 04	3130 62 05	3130 62 10	14	5,7	0,009

## > Assembly of the Tamper-Evident Safety Clip



Assemble the clip  
Connect the tube

Cut the clip with pliers  
Remove the clip  
Release the tube